



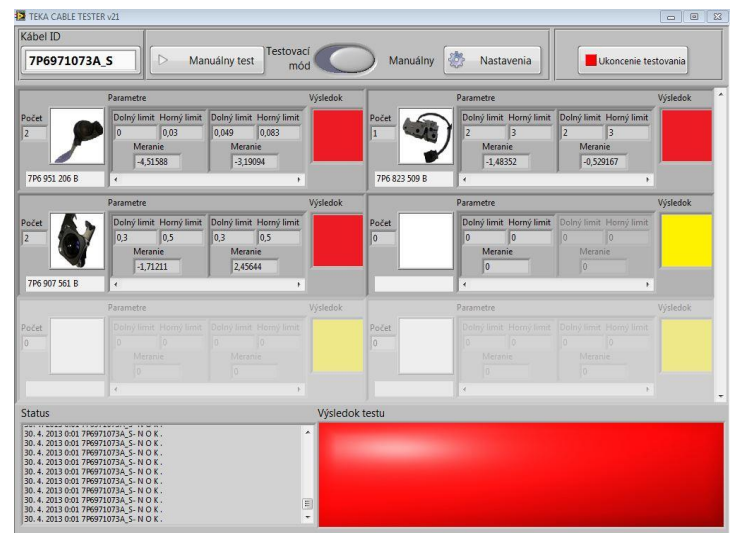
HARDWARE-SOFTWARE COMPLEX CAR TEST CABLE ASSEMBLIES

In the production of complex mechanisms play an important role electronic control modules and display. Individual components of complex electronic systems in different locations and mechanisms for coordinated uptime require integration into the overall system. In the automotive industry, such systems are combined by means of cable assemblies that are designed for the connection of certain modules and have a corresponding set of wires and connectors connected. During manufacture cable assemblies, as well as other important systems that are responsible for the safety and comfort of the driver and passengers of the vehicle, subject to thorough study and identification of defects or non-compliance with technical regulations. Analysis is performed in the study of the electrical characteristics of wired systems.

Used for monitoring hardware and software system, which consists of a module connection cable assemblies with the appropriate connector, data collection and data analysis module of the database and display system and generate test report.



Installation for testing automotive cable assemblies



Software interface to manage the testing process